

fixer

For engineering model exchange professionals

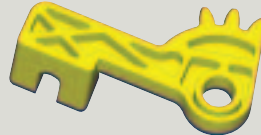


European roundup

Business expansion and the exhibition trail for ITI TranscendData's European partners

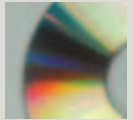
Access all areas

Legacy data unlocked by CADfix at ArvinMeritor



CD giveaway

Free CADfix demo CD for all our readers

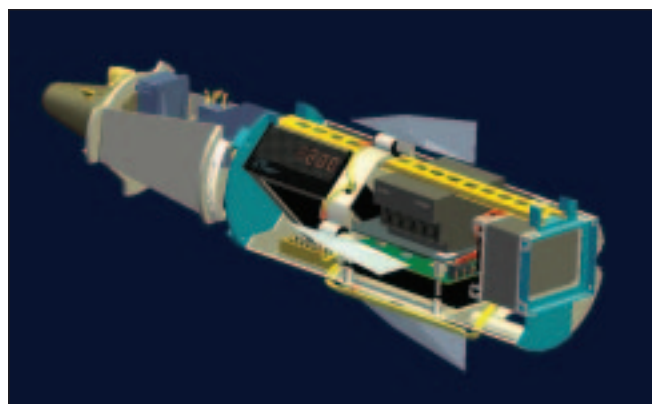


The direct route

New CADfix includes native file support and more powerful automation for unrivalled data interoperability

The latest incarnation of CADfix, the leading interoperability solution, reinforces ITI TranscendData's commitment to streamlining CAD data transfer and sharing by including some key improvements in the areas of native file support and automation. These improvements open the way for more manufacturing companies of all sizes to make more use of and therefore raise the value of their product data.

While the use of neutral file formats such as IGES, STEP, Parasolid and ACIS remains the primary starting point for engineering data transfer across a large proportion of the engineering supply chain, ITI TranscendData has always recognised that the ultimate goal for interoperability providers should be the ability to move smoothly from one native CAD file format to another. This ideal is now possible following new developer agreements between ITI TranscendData and some of the key CAD vendors, making enhanced CAD connection capabilities for CADfix a reality.

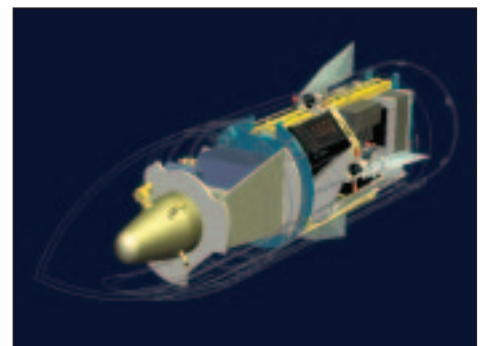


CADfix users can import and export native Pro/E files

The latest version of CADfix enables users to import and export native files from Pro/Engineer and Catia V5. This is in addition to the existing native support for Catia V4 and a number of downstream CAE applications. And of course import and export support for all the common CAD-neutral formats (including ACIS, Parasolid, STEP, IGES, STL and DXF) means that CADfix can now offer one of the most comprehensive ranges of interoperability options on the market.

ITI TranscendData has also added more power to the automated tools within CADfix. This represents the latest phase in CADfix's evolution from a fully interactive suite of enhanced diagnostic and healing tools to something that approaches the "black box" translator that every engineer who has ever had an interoperability problem must dream of.

Automation in CADfix continues to be built around the Wizard, in which users define the parameters of a translation process via a simple graphical interface. As before, any translation path that "fails" results in the deployment of CADfix's interactive healing and repair tools, but ITI TranscendData has undertaken an extensive analysis of the most common causes and remedies to such failures and built more of the solutions into the automated Wizard. This means that a greatly increased number of translations can pass through smoothly and that



CADfix's automated repair tools make for smooth data translation

users will have to spend less time getting to grips with the vagaries of IGES file editing.

CADfix's automated translation goes far further than other point-to-point automatic translators. Underlying the CADfix Wizard process are intelligent, knowledge-based, data repair and healing macros which have been built up from years of practical experience processing CAD geometry, identifying and rectifying potential interoperability problems. With CADfix, not only do you get automatic translation, but you also get real problems resolved automatically as part of the process.

With these latest developments, ITI TranscendData has pushed interoperability a stage closer to the goal of seamless system-to-system data translation. This means massive productivity gains and a reduced time to market for any manufacturing company that chooses to adopt CADfix.

To find out how you can benefit email euinfo@transcendata.com

European Round-up

ITI TranscenData's Swedish partner, Protech, is gearing up for another year of exhibitions, kicking off with Konstruktion & Design 2003 (Design Engineering 2003). The show takes place at Svenska Mässan, Gothenburg, Sweden from 8 to 11 April and runs in conjunction with ScanPlast and IT in production. Protech will be on stand number A04:42 for the duration of the show, which is the leading event for constructors and product developers in Scandinavia.

Protech will showcase and demo a wide range of design products, such as the 3D-printer Dimension from Stratasys, CAD/CAM products from Delcam and Missler, MicroScribe G2 from Immersion as well as CADIQ and CADfix from ITI TranscenData. Protech is keen to show how these solutions work together and with other products to benefit the entire product lifecycle process.

Protech continues to expand, with the opening of an office in Goteburg following the recruitment of a new applications engineer. The company has also welcomed in the New Year with a new website. Visitors can explore the easy-to-navigate site and find useful product information as well as news about the company.

www.protech.se

French partner, Ingetech is also hoping to make the most of the exhibition trail, beginning its campaign at MICAD. The exhibition takes place on the 1, 2 and 3 of April, in Paris Porte de Versailles, and Ingetech will be on stand H14.

Ingetech will be using the show to demonstrate the capability of CADfix version 5.1 as well as DEXcenter and CADIQ.

This year's MICAD conferences will cover a broad range of industry topics, including:

- Collaborative design
- Rapid manufacturing
- PLM and interoperability
- Architecture: digital mock-ups and modelling for real projects
- The role of digital simulation in business
- PLM applications in the industry

www.ingetech.fr

TranscenData Germany and CADfix continue to establish themselves successfully on the German market. As well as adding further new customers – such as the well-known steel company ThyssenKrupp – TranscenData has acquired further important strategic partners in the CATIA environment. One of these is the Munich Systems company PPE GmbH, a member of the Solid System Team Association. PPE is a sales partner of EDS for Solid Edge. The Munich company decided on a sales partnership with TranscenData after extensive tests examining the translation of CATIA data into Solid Edge clearly identified CADfix as the best tool for the job. Soon after signing the reseller contract PPE quickly gained its first customers for CADfix.

TranscenData Germany has also set up a sales partnership with COSCOM, another OEM within the CATIA environment. At its branches throughout Germany COSCOM offers innovative products for computer-aided production to users in the metalworking industry. For Werner Hochreiter, Sales Manager for TranscenData Germany, these new partnerships confirm the constant need for professional conversion solutions: "The problem of data conversion between CAD systems has still not been satisfactorily solved in our country. The automotive industry in particular operates totally on the basis of complex 3D models with free-form surfaces. CADfix is a quality translator that will present many more advantages to the supply chain in this important market."

CADfix opens doors to legacy data at ArvinMeritor

ArvinMeritor is a major international Tier One supplier, designing and manufacturing automotive sub-assemblies for a customer list that reads like a Who's Who of the auto-manufacturing world. Its business groups specialise in automotive components and assemblies that range from sunroofs to suspension systems and from wheels to exhaust systems. Stirchley in Birmingham is the home of ArvinMeritor UK's Access Control Systems business, where the company manufactures latch and actuator systems for the doors of passenger vehicles.

CAD systems

The Access Control Systems division counts many of the world's leading OEMs among its customers. Until a couple of years ago the company performed all of its design work using CADD5, and had to work around the need to accept and deliver other CAD formats as and when such a need arose. Then, partly due to pressure from some of the OEMs and partly because CADD5 seemed destined for little or no ongoing development in the PTC stable, ArvinMeritor decided to revisit its corporate CAD policy.

Along with several other business groups, Access Control Systems decided to standardise on Catia as its core CAD/CAM solution,

although because of the interoperability problem, it would not be enough on its own. "We could not ignore the pressure from the OEMs for direct interoperability," said John Osman, an application engineer at Access Control Systems, "so we have ended up with a mix of systems including Catia 4 and 5, I-DEAS and, of course, our existing seats of CADD5. In effect we have gone from a single CAD system two years ago to using at least four now – more if you take into account our CAM and CAE tools."

Legacy data

One of the biggest challenges in this multi-CAD environment turned out to be reusing the legacy data from the CADD5 only days. Initially, the only medium available for data transfer was IGES but it quickly became clear that this method posed more problems than it solved. "It is vital for us to be able to access our legacy data," explained Osman. "This is the only way we could ensure that the work we have undertaken in the past on both historical and ongoing long-term projects would not be wasted. But using IGES to move the data from CADD5 to Catia turned out to be a long and drawn-out process."

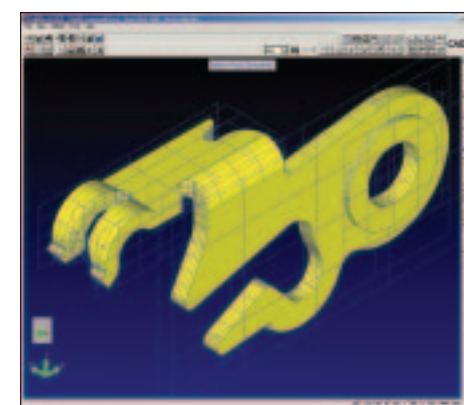
To tackle this issue directly, ArvinMeritor invested in CADfix from ITI TranscenData, deployed on a floating licence system so that it is available to all CAD/CAM/CAE users. "We knew that CADfix provided a reliable intermediary for transferring data, particularly via the IGES route," explained Osman. "So we initially took it on board to import and export IGES in such a way that the preparation work in CADD5 would no longer be needed. We

have since invested in the native Catia translators, but even via the IGES route we have seen massive improvements with CADfix."

Productivity gains

Instead of half an hour of preparation for each assembly component before even thinking about going into Catia, parts can now be transferred from CADD5 to Catia in around five minutes. This alone has provided a clear business benefit as a full assembly takes no more than a couple of hours instead of days.

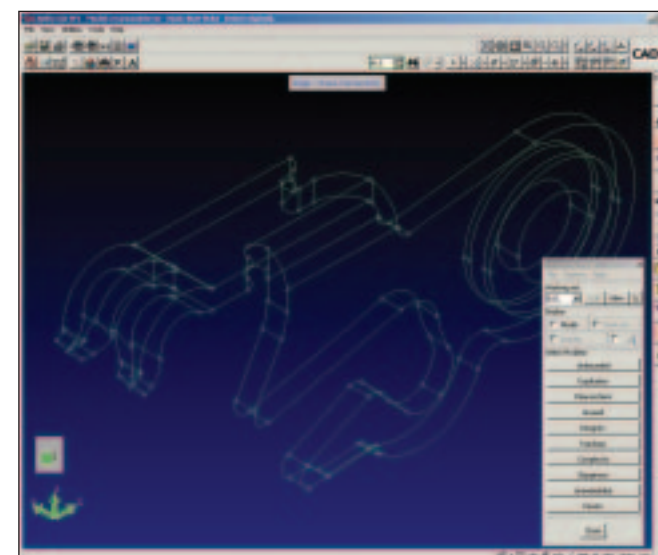
But the introduction of CADfix has also meant that live engineering data can be readily shared between different CAD/CAM/CAE systems: STL files, for instance, can be exported directly from CADfix for use in ArvinMeritor's dynamic



Legacy data is back in use at ArvinMeritor

analysis software (Adams). And the FEA team regularly makes use of CADfix's defeaturing functionality to remove small details that have been included by the designer but are not significant from an engineering point of view and will cause disproportionate problems when it comes to meshing for analysis. In all, some 70 percent of the components his team produces are processed in CADfix at some point in the design cycle.

To find out how CADfix can improve your business, email euinfo@transcendata.com



CADfix offers the freedom to use a number of CAD/CAM/CAE systems

ITI TranscenData launches DEXcenter Version 4.1

ITI TranscenData has released DEXcenter™ 4.1, the latest version of its web based engineering supply chain data exchange solution. Version 4.1 introduces a completely new user interface, expanded support for AutoCAD and SolidWorks, and the integration of CAD model quality certification.

DEXcenter enables tight integration and effective collaboration across the engineering supply chain. With the DEXcenter 4.1 release, DEXcenter now supports virtually all of the major CAD systems.

This latest release of DEXcenter contains the following major enhancements:

- A completely redesigned user interface
- AutoCAD 2002, STEP, IGES and DXF translation support
- SolidWorks 2001, STEP, IGES and DXF translation support
- Integration of CAD model quality based on SASIG/JAMA diagnostics

- Integration of AutoWeb for automotive data distribution/transmission
 - Enhanced support for JT graphic visualization export
- "Collaboration and supply chain integration are certainly grabbing much of the spotlight these days," stated Don Hemmelgarn, President of ITI TranscenData. "Without question an organization's ability to freely share and reuse product data is the critical differentiator when it comes to improving product development efficiency and time to market. DEXcenter is successfully integrating the engineering supply chain in real-world production scenarios for leading organizations such as Xerox, Kodak, Seagate, Johnson Controls, Samsung Electronics, and others."

To find out how DEXcenter can help improve your supply chain integration, email us today at euinfo@transcendata.com

ThyssenKrupp forges ahead with CADfix

ThyssenKrupp Turbinenkomponenten GmbH has chosen CADfix from ITI TranscenData for all its CAD data interoperability needs. Thyssen's technology division is able to use the software to eliminate data inconsistencies that would normally make it impossible to read geometric models into different FEA systems. Using CADfix, Thyssen's CAD models can be transferred directly into its FEA systems, significantly reducing the number of costly and time-consuming prototypes that the company has to model.

Thyssen is using CADfix in the design of blade forging tools for power generator and aircraft turbines. The software converts geometry models of turbine blades and their forging dies. Export functions and interfaces read the CAD models directly into FEA systems such as ANSYS or SuperForge. Engineering designers at the turbine construction company are able to execute the transfer process almost entirely automatically. When necessary, CADfix also provides support with interactive diagnosis and repair tools.

"Earlier transfer methods converted the forging dies incorrectly, adding notches and serrations where none existed," said Otto Handel,



Precision forged turbine blades from ThyssenKrupp are delivered worldwide to all well-known Turbine manufacturers

project engineer at Thyssen, explaining the advantages of the data transfer process. "But CADfix immediately reads the model correctly and no repairs need to be made." In future the Turbine Division of ThyssenKrupp also intends to use CADfix to migrate data from its legacy CAD systems.

forthcoming events

Pro/E User Conference
5 March, Warwick, UK

Solid Modelling (Stand 61)
26-27 March, Coventry, UK

Micad 2003
1-3 April, Paris, France

Design Engineering 2003
8-11 April, Gothenburg, Sweden

NAFEMS World Conference 2003
27-31 May, Florida, USA

CADFEM Interoperability Seminars
2-3 June, Zurich, Switzerland

EnginSoft Annual Conference
2-5 October, Sardinia, Italy

FEMSYS User Conference
7-8 October, London, UK

CAT 2003 Exhibition
7-10 October, Stuttgart, Germany

Euromold 2003
3-6 December, Frankfurt, Germany

Letter from America

In the States, ITI TranscendData's recent successes have been dominated by major consultancy projects, underlining both its pedigree in CAD/PDM integration and the continuing emergence of DEXcenter.

ITI TranscendData's PDM integration business – run out of ITI headquarters in Milford, Ohio – is a long established and important element of the group's success. TranscendData recognises that major organisations, particularly those with large and distributed design and engineering infrastructures, can only function effectively by addressing not only their engineering data interoperability issues but also the need to integrate their CAD, PLM and ERP systems. To that end, ongoing partnerships have been established with the major PLM vendors, including Matrix One, EDS PLM and PTC and these have been put to good use in recent months in significant new integration projects throughout the world.

A major window and door manufacturer, for example, has recently commissioned ITI TranscendData to develop an integration between its CAD system and its Oracle-based ERP solution. In addition, a recent PLM integration project has been started for a major US manufacturer of medical equipment.

DEXcenter continues to enjoy great success, particularly among Tier One automotive suppliers, who arguably have most to gain from the automation of quality-assured data exchange that DEXcenter offers. In addition to the successfully established sites at Metaldyne and Johnson Controls, new implementations have begun at Magna International, a global automotive supplier with 44 development sites and 72,000 employees, and Sauer-Danfoss, a supplier of mobile hydraulic and electronic solutions for industrial vehicles.

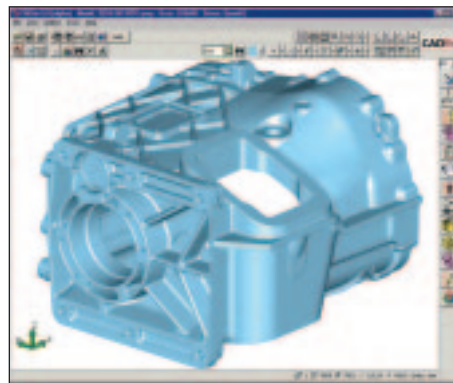
To find out more about PDM integration or DEXcenter email euinfo@transcendata.com

ITI TranscendData and CD-adapco Japan sign major OEM agreement

ITI TranscendData has signed a major OEM agreement with CD-adapco Japan. This agreement will see CADfix, ITI TranscendData's leading engineering data interoperability tool become an integral part of CD-adapco Japan's leading edge pre/post processor, Pro-Modeler®. Developed by CD-adapco Japan specifically for the Asian market, Pro-Modeler is sold via CD-adapco and its partners throughout the Asia Pacific region as a pre/post processor to its low end computational fluid dynamics (CFD) software, STAR-LT®. Pro-Modeler users will be able to take advantage of embedded CADfix functionality from the next release of Pro-Modeler in the first quarter of 2003.

The OEM deal with CD-adapco Japan will see CADfix's automatic batch processing tools bundled with every seat of Pro-Modeler. This will allow users to import STEP, IGES, ACIS, Parasolid and (optionally) CATIA models directly into Pro-Modeler, with CADfix taking care of the necessary translation to Pro-Modeler's ACIS kernel. CD-adapco Japan will also act as a reseller for the interactive CADfix solution.

"This agreement reinforces ITI TranscendData's strong position in the Asia Pacific market," says Tom Makoski, Vice President of Sales and



Pro-Modeler users can utilise CADfix functionality

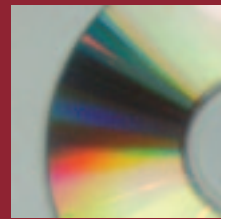
Marketing, ITI TranscendData. "Pro-Modeler users are in an ideal position to take advantage of CADfix functionality as the local market is rich with different upstream CAD solutions. Through the OEM and reseller contracts, more CFD engineers will be able to accept diverse CAD data with confidence."

"This agreement is just the start of a fruitful long-term relationship," says Kazu Ishikawa, Director of CD-adapco Japan. "We are already looking at ways of integrating our technology and ITI TranscendData's to produce advanced CAE solutions for our customers. And of course our existing Pro-Modeler user base will see immediate benefits early next year."

Free demo CD for all readers

ITI TranscendData is offering Fixer readers the chance to experience the very latest in CADfix capability – free of charge. The new demo CD explores the full range of CADfix functionality, with helpful advice and tricks of the trade to help users make the most of the tools available.

The CD has been produced as part of a global marketing and education campaign by ITI TranscendData to deliver the benefits of data interoperability to a wider audience. The full marketing programme includes an extensive direct



Experience the very latest from CADfix

mail campaign and the redesign of the company's website. Visitors who register at the site now have the chance to enter a prize draw, where they can win a Sony Digital 8 Handycam® or a Nike sport digital audio player.

If you would like to be sent a copy of the demo CD, please email your name and address to euinfo@transcendata.com. To register at the website visit www.transcendata.com


 TranscendData
Global Interoperability Solutions


TranscendData Europe Limited
Oakington House, Oakington,
Cambridge CB4 5AF, UK

Tel: +44 (0)1223 237 111
Fax: +44 (0)1223 234 192
E-mail: euinfo@transcendata.com



ITI TranscendData
5303 DuPont Circle, Milford,
Ohio 45150, USA

Tel: +1 (513) 576-3900
Fax: +1 (513) 576-3994
E-mail: info@transcendata.com

www.transcendata.com